

April

SER-Ninos Breakfast K8

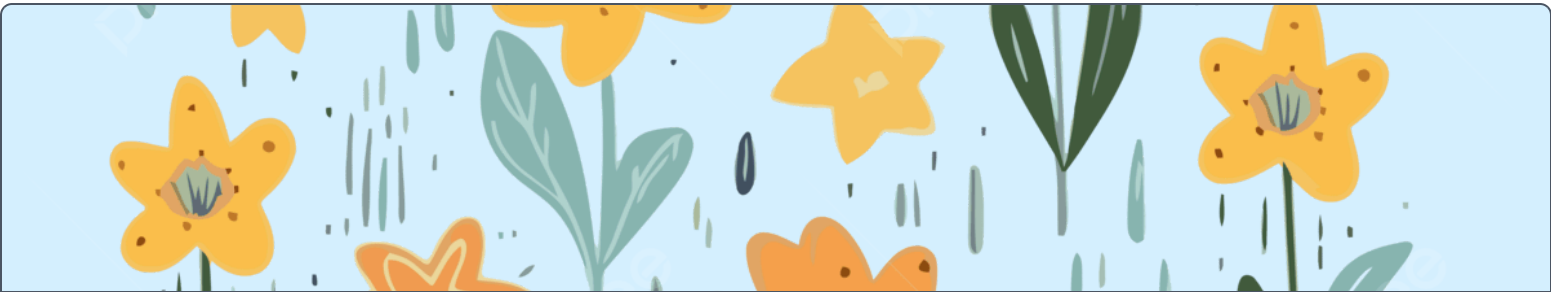
		Breakfast Entree 1 Maple Pancake, Chicken Sausage & Cheese Sandwich Fruit Banana Apple Juice	Breakfast Entree 2 Honey Chicken Biscuit Fruit Sour Mixed Berry Raisins Apple Juice		
	6 Breakfast Entree 7 Trix Mini French Toast Fruit Diced Peaches Apple Juice	Breakfast Entree 8 Maple Belgian Waffle Fruit Banana Apple Juice	Breakfast Entree 9 Breakfast Turkey Sausage Pizza Fruit Craisins Apple Juice	Breakfast Entree 10 Strawberry Pop Tart Fruit Fuji Apple Apple Juice	
Breakfast Entree 13 Cocoa Puffs Cereal Fruit Applesauce Apple Juice Grains Honey Graham Crackers	Breakfast Entree 14 Turkey Sausage, Egg & Cheese Breakfast Bagel Fruit Diced Peaches Apple Juice	Breakfast Entree 15 Mini Maple Pancakes Fruit Banana Apple Juice	Breakfast Entree 16 Turkey Sausage Biscuit Fruit Sour Watermelon Raisins Apple Juice	Breakfast Entree 17 Lucky Charms Cereal Fruit Fuji Apple Apple Juice	
Breakfast Entree 20 Mini Cinnamon Rolls Fruit Apple Juice Applesauce	Breakfast Entree 21 Egg, Turkey Sausage & Cheese Breakfast Burrito Fruit Diced Peaches Apple Juice	Breakfast Entree 22 Blueberry Belgian Waffle Fruit Banana Apple Juice	Breakfast Entree 23 NEW!! Beef & Chicken Maple Kolache Fruit Sour Mixed Berry Raisins Apple Juice	Breakfast Entree 24 Yogurt & Granola Fruit Fuji Apple Apple Juice	
Breakfast Entree 27 Apple Cinnamon Nutri-Grain Bar Fruit Applesauce Apple Juice	Breakfast Entree 28 Cinnamon Toast Crunch Mini French Toast Fruit Diced Peaches Apple Juice	Breakfast Entree 29 Mini Confetti Pancakes Fruit Banana Apple Juice	Breakfast Entree 30 Honey Chicken Biscuit Fruit Craisins Apple Juice		

In accordance with Federal civil rights law and U.S. Department of Agriculture (USDA) civil rights regulations and policies, the USDA, its Agencies, offices, and employees, and institutions participating in or administering USDA programs are prohibited from discriminating based on race, color, national origin, religion, sex, disability, age, marital status, family/parental status, income derived from a public assistance program, political beliefs, or reprisal or retaliation for prior civil rights activity, in any program or activity conducted or funded by USDA (not all bases apply to all programs). Remedies and complaint filing deadlines vary by program or incident.

Persons with disabilities who require alternative means of communication for program information (e.g., Braille, large print, audiotope, American Sign Language, etc.) should contact the State or local Agency that administers the program or contact USDA through the Telecommunications Relay Service at 711 (voice and TTY). Additionally, program information may be made available in languages other than English.

To file a program discrimination complaint, complete the USDA Program Discrimination Complaint Form, [AD-3027](#), found online at How to File a Program Discrimination Complaint and at any USDA office or write a letter addressed to USDA and provide in the letter all of the information requested in the form. To request a copy of the complaint form, call [\(866\) 632-9992](#). Submit your completed form or letter to USDA by:

mail: U.S. Department of Agriculture, Office of the Assistant Secretary for Civil Rights, 1400 Independence Avenue, SW, Mail Stop 9410, Washington, D.C. 20250-9410;
 fax: [\(202\) 690-7442](#); or
 email: program.intake@usda.gov. *USDA is an equal opportunity provider, employer, and lender.*



April

SER-Ninos

Breakfast HS or Co-mingled (Prek-12)

		Breakfast Entree 1 Maple Pancake, Chicken Sausage & Cheese Sandwich Fruit Banana Apple Juice	Breakfast Entree 2 Honey Chicken Biscuit Fruit Sour Mixed Berry Raisins Apple Juice		
	6 Breakfast Entree 7 Trix Mini French Toast Fruit Diced Peaches Apple Juice	Breakfast Entree 8 Maple Belgian Waffle Fruit Banana Apple Juice	Breakfast Entree 9 Breakfast Turkey Sausage Pizza Fruit Craisins Apple Juice	Breakfast Entree 10 Strawberry Pop Tart Fruit Fuji Apple Apple Juice	
Breakfast Entree 13 Cocoa Puffs Cereal Fruit Applesauce Apple Juice Grains Honey Graham Crackers	Breakfast Entree 14 Turkey Sausage, Egg & Cheese Breakfast Bagel Fruit Diced Peaches Apple Juice	Breakfast Entree 15 Mini Maple Pancakes Fruit Banana Apple Juice	Breakfast Entree 16 Turkey Sausage Biscuit Fruit Sour Watermelon Raisins Apple Juice	Breakfast Entree 17 Lucky Charms Cereal Fruit Fuji Apple Apple Juice	
Breakfast Entree 20 Mini Cinnamon Rolls Fruit Apple Juice Applesauce	Breakfast Entree 21 Egg, Turkey Sausage & Cheese Breakfast Burrito Fruit Diced Peaches Apple Juice	Breakfast Entree 22 Blueberry Belgian Waffle Fruit Banana Apple Juice	Breakfast Entree 23 NEW!! Beef & Chicken Maple Kolache Fruit Sour Mixed Berry Raisins Apple Juice	Breakfast Entree 24 Yogurt & Granola Fruit Fuji Apple Apple Juice	
Breakfast Entree 27 Apple Cinnamon Nutri-Grain Bar Fruit Applesauce Apple Juice	Breakfast Entree 28 Cinnamon Toast Crunch Mini French Toast Fruit Diced Peaches Apple Juice	Breakfast Entree 29 Mini Confetti Pancakes Fruit Banana Apple Juice	Breakfast Entree 30 Honey Chicken Biscuit Fruit Craisins Apple Juice		

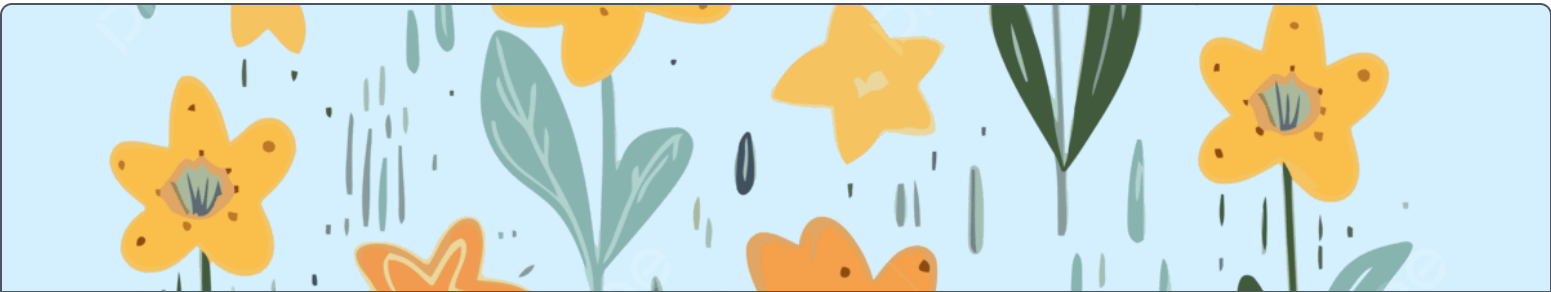
In accordance with Federal civil rights law and U.S. Department of Agriculture (USDA) civil rights regulations and policies, the USDA, its Agencies, offices, and employees, and institutions participating in or administering USDA programs are prohibited from discriminating based on race, color, national origin, religion, sex, disability, age, marital status, family/parental status, income derived from a public assistance program, political beliefs, or reprisal or retaliation for prior civil rights activity, in any program or activity conducted or funded by USDA (not all bases apply to all programs). Remedies and complaint filing deadlines vary by program or incident.

Persons with disabilities who require alternative means of communication for program information (e.g., Braille, large print, audiotope, American Sign Language, etc.) should contact the State or local Agency that administers the program or contact USDA through the Telecommunications Relay Service at 711 (voice and TTY). Additionally, program information may be made available in languages other than English.

To file a program discrimination complaint, complete the USDA Program Discrimination Complaint Form, [AD-3027](#), found online at How to File a Program Discrimination Complaint and at any USDA office or write a letter addressed to USDA and provide in the letter all of the information requested in the form. To request a copy of the complaint form, call [\(866\) 632-9992](#). Submit your completed form or letter to USDA by:

mail: U.S. Department of Agriculture, Office of the Assistant Secretary for Civil Rights, 1400 Independence Avenue, SW, Mail Stop 9410, Washington, D.C. 20250-9410;
 fax: [\(202\) 690-7442](#); or
 email: program.intake@usda.gov.

USDA is an equal opportunity provider, employer, and lender.



April

SER-Ninos Lunch Preschool

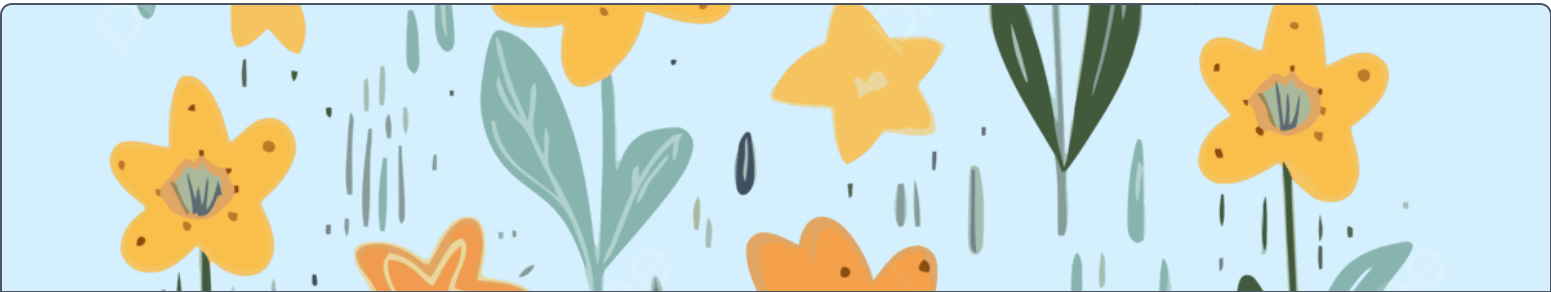
		Lunch Entree Breakfast for Lunch: Scrambled Eggs & Biscuit Vegetables Tater Tots Fruit Pears	1	Lunch Entree Spaghetti & Meatballs Fruit Pineapple Tidbits	2		3		
	6	Lunch Entree Chicken Smackers & Ketchup Vegetables Diced Carrots Fruit Blueberries	7	Lunch Entree Beef & Cheese Taco Vegetables Pinto Beans Fruit Pears	8	Lunch Entree Chicken Alfredo Vegetables Broccoli Fruit Pineapple Tidbits	9	Lunch Entree Turkey Pepperoni Pizza Rippers Vegetables Diced Carrots Fruit Cool Tropics Slush	10
Lunch Entree Meatball Sub Fruit Diced Peaches	13	Lunch Entree Grilled Cheese Vegetables Pinto Beans Fruit Blueberries	14	Lunch Entree Chicken Tenders & Ketchup Vegetables Green Beans Fruit Pears	15	Lunch Entree Cheeseburger Mac Fruit Pineapple Tidbits	16	Lunch Entree Italian Pull Apart Cheese & Garlic Bread Vegetables Broccoli Florets Fruit Applesauce	17
Lunch Entree BBQ Chicken Tender Sandwich Vegetables Sugar Snap Peas Fruit Diced Peaches	20	Lunch Entree Beef & Cheese Taco Vegetables Corn Fruit Blueberries	21	Lunch Entree Meatballs,beef Vegetables Mashed Potatoes Fruit Pears Grains Dinner Roll Misc. Brown Gravy 1 ounce	22	Lunch Entree Breakfast for Lunch: Scrambled Eggs & French Toast Sticks Vegetables Seasoned Potatoes Fruit Pineapple Tidbits	23	Lunch Entree Mini Beef Pepperoni Calzones Vegetables Diced Carrots Fruit Applesauce Condiments Ranch Packet	24
Lunch Entree Chicken Nuggets Vegetables Broccoli Fruit Diced Peaches	27	Lunch Entree Beef & Cheese Quesadilla Vegetables Diced Carrots Fruit Blueberries	28	Lunch Entree "Fried" Chicken Bowl with Mashed Potatoes Fruit Pears	29	Lunch Entree S&F Foods Turkey Ham & Cheese Stromboli Vegetables Green Beans Fruit Pineapple Tidbits	30		

In accordance with Federal civil rights law and U.S. Department of Agriculture (USDA) civil rights regulations and policies, the USDA, its Agencies, offices, and employees, and institutions participating in or administering USDA programs are prohibited from discriminating based on race, color, national origin, religion, sex, disability, age, marital status, family/parental status, income derived from a public assistance program, political beliefs, or reprisal or retaliation for prior civil rights activity, in any program or activity conducted or funded by USDA (not all bases apply to all programs). Remedies and complaint filing deadlines vary by program or incident.

Persons with disabilities who require alternative means of communication for program information (e.g., Braille, large print, audiotope, American Sign Language, etc.) should contact the State or local Agency that administers the program or contact USDA through the Telecommunications Relay Service at 711 (voice and TTY). Additionally, program information may be made available in languages other than English.

To file a program discrimination complaint, complete the USDA Program Discrimination Complaint Form, [AD-3027](#), found online at How to File a Program Discrimination Complaint and at any USDA office or write a letter addressed to USDA and provide in the letter all of the information requested in the form. To request a copy of the complaint form, call [\(866\) 632-9992](#). Submit your completed form or letter to USDA by:

mail: U.S. Department of Agriculture, Office of the Assistant Secretary for Civil Rights, 1400 Independence Avenue, SW, Mail Stop 9410, Washington, D.C. 20250-9410;
 fax: [\(202\) 690-7442](#); or
 email: program.intake@usda.gov. *USDA is an equal opportunity provider, employer, and lender.*



April

SER-Ninos Lunch K8

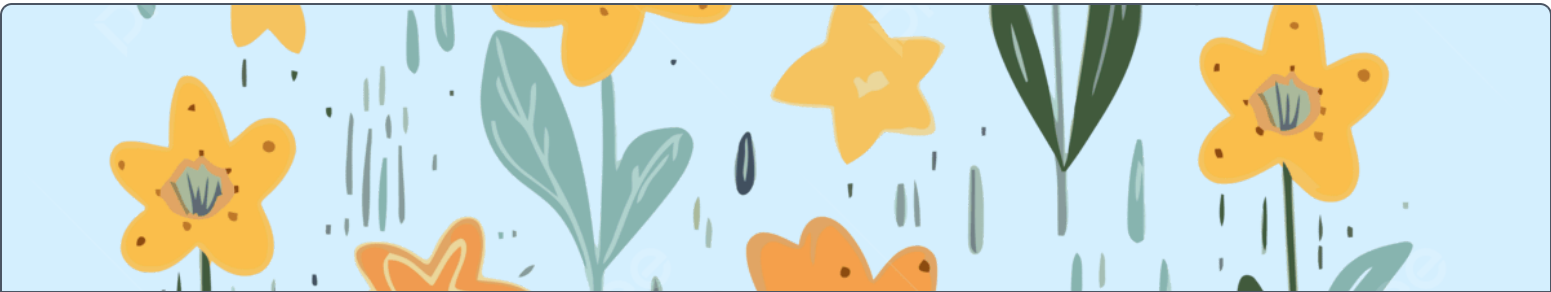
		Lunch Entree Breakfast for Lunch: Scrambled Eggs, Turkey Sausage & Biscuit Vegetables Tater Tots Dragon Punch Fruit Red Apple Slices	1	Lunch Entree Spaghetti & Meatballs Vegetables Garden Salad Fruit Apple Juice	2		3		
	6	Lunch Entree Chicken Smackers & Ketchup Vegetables Diced Carrots Fruit Orange Grains Broccoli Cheese Rice	7	Lunch Entree Crispy Beef Taco Vegetables Pinto Beans Corn Fruit Red Apple Slices Grains Mexican Rice	8	Lunch Entree Chicken Alfredo Vegetables Broccoli Fruit Apple Juice	9	Lunch Entree Turkey Pepperoni Pizza Rippers Vegetables Green Beans Diced Carrots Fruit Cool Tropics Slush	10
Lunch Entree Meatball Sub Vegetables Crinkle Cut Fries Fruit Sour Watermelon Raisins	13	Lunch Entree Mini Chicken Corn Dogs Vegetables Pinto Beans Vegetable Blend Fruit Orange	14	Lunch Entree Chicken Tenders & Ketchup Vegetables Tater Tots Green Beans Fruit Red Apple Slices	15	Lunch Entree Cheeseburger Mac Vegetables Baby Carrots Fruit Apple Juice Condiments Ranch Packet	16	Lunch Entree Italian Pull Apart Cheese & Garlic Bread Vegetables Broccoli Florets Cucumber Slices Fruit Diced Peaches Condiments Ranch Packet	17
Lunch Entree BBQ Chicken Tender Sandwich Vegetables Diced Carrots Dill Pickle Chips Fruit Sour Mixed Berry Raisins	20	Lunch Entree Beef & Cheese Walking Taco Vegetables Pinto Beans Corn Fruit Orange	21	Lunch Entree Meatballs,beef Vegetables Mashed Potatoes & Gravy Green Beans Fruit Red Apple Slices Grains Dinner Roll	22	Lunch Entree Breakfast for Lunch: Scrambled Eggs & French Toast Sticks Vegetables Diced Potatoes Dragon Punch Fruit Apple Juice	23	Lunch Entree Mini Beef Pepperoni Calzones Vegetables Broccoli Diced Carrots Fruit Diced Peaches	24
Lunch Entree All Beef Hot Dog Vegetables Crinkle Cut Fries Broccoli Fruit Sour Watermelon Raisins	27	Lunch Entree Beef & Cheese Quesadilla Vegetables Pinto Beans Diced Carrots Fruit Orange	28	Lunch Entree "Fried" Chicken Bowl with Mashed Potatoes & Corn Fruit Red Apple Slices	29	Lunch Entree S&F Foods Turkey Ham & Cheese Stromboli Vegetables Green Beans Broccoli Fruit Apple Juice	30		

In accordance with Federal civil rights law and U.S. Department of Agriculture (USDA) civil rights regulations and policies, the USDA, its Agencies, offices, and employees, and institutions participating in or administering USDA programs are prohibited from discriminating based on race, color, national origin, religion, sex, disability, age, marital status, family/parental status, income derived from a public assistance program, political beliefs, or reprisal or retaliation for prior civil rights activity, in any program or activity conducted or funded by USDA (not all bases apply to all programs). Remedies and complaint filing deadlines vary by program or incident.

Persons with disabilities who require alternative means of communication for program information (e.g., Braille, large print, audiotape, American Sign Language, etc.) should contact the State or local Agency that administers the program or contact USDA through the Telecommunications Relay Service at 711 (voice and TTY). Additionally, program information may be made available in languages other than English.

To file a program discrimination complaint, complete the USDA Program Discrimination Complaint Form, [AD-3027](#), found online at How to File a Program Discrimination Complaint and at any USDA office or write a letter addressed to USDA and provide in the letter all of the information requested in the form. To request a copy of the complaint form, call [\(866\) 632-9992](#). Submit your completed form or letter to USDA by:

mail: U.S. Department of Agriculture, Office of the Assistant Secretary for Civil Rights, 1400 Independence Avenue, SW, Mail Stop 9410, Washington, D.C. 20250-9410;
 fax: [\(202\) 690-7442](#); or
 email: program.intake@usda.gov. *USDA is an equal opportunity provider, employer, and lender.*



April

SER-Ninos Lunch HS

		Lunch Entree Breakfast for Lunch: Scrambled Eggs, Turkey Sausage & Biscuit Vegetables Tater Tots Dragon Punch Fruit Red Apple Slices Apple Juice	1	Lunch Entree Spaghetti & Meatballs Vegetables Garden Salad Fruit Apple Juice Apple Crisps	2		3		
	6	Lunch Entree Chicken Smackers & Ketchup Vegetables Diced Carrots Fruit Orange Apple Juice Grains Broccoli Cheese Rice Honey Graham Crackers	7	Lunch Entree Crispy Beef Taco Vegetables Pinto Beans Corn Fruit Red Apple Slices Apple Juice Grains Mexican Rice	8	Lunch Entree Chicken Alfredo Vegetables Broccoli Baby Carrots Fruit Apple Juice Apple Crisps Grains Dinner Roll	9	Lunch Entree Turkey Pepperoni Pizza Rippers Vegetables Green Beans Diced Carrots Fruit Diced Peaches Apple Juice	10
Lunch Entree Meatball Sub Vegetables Crinkle Cut Fries Dill Pickle Chips Fruit Sour Watermelon Raisins Apple Juice	13	Lunch Entree Mini Chicken Corn Dogs Vegetables Pinto Beans Vegetable Blend Fruit Orange Apple Juice	14	Lunch Entree Chicken Tenders & Ketchup Vegetables Tater Tots Green Beans Fruit Red Apple Slices Apple Juice Grains Honey Graham Crackers	15	Lunch Entree Cheeseburger Mac Vegetables Baby Carrots Fruit Apple Juice Apple Crisps Grains Dinner Roll	16	Lunch Entree Italian Pull Apart Cheese & Garlic Bread Vegetables Broccoli Florets Baby Carrots Fruit Diced Peaches Apple Juice Condiments Ranch Packet	17
Lunch Entree BBQ Chicken Tender Sandwich Vegetables Diced Carrots Dill Pickle Chips Fruit Sour Mixed Berry Raisins Apple Juice	20	Lunch Entree Beef & Cheese Walking Taco Vegetables Pinto Beans Corn Fruit Orange Apple Juice Grains Honey Graham Crackers	21	Lunch Entree Meatballs,beef Vegetables Mashed Potatoes & Gravy Green Beans Fruit Red Apple Slices Apple Juice Grains Dinner Roll Honey Graham Crackers Misc. String Cheese	22	Lunch Entree Breakfast for Lunch: Scrambled Eggs & French Toast Sticks Vegetables Diced Potatoes Dragon Punch Fruit Apple Crisps Apple Juice Grains Honey Graham Crackers	23	Lunch Entree Mini Beef Pepperoni Calzones Vegetables Broccoli Diced Carrots Fruit Apple Juice Diced Peaches	24
Lunch Entree All Beef Hot Dog Vegetables Crinkle Cut Fries Broccoli Fruit Sour Watermelon Raisins Apple Juice	27	Lunch Entree Beef & Cheese Quesadilla Vegetables Pinto Beans Diced Carrots Fruit Orange Apple Juice	28	Lunch Entree "Fried" Chicken Bowl with Mashed Potatoes & Corn Fruit Red Apple Slices Apple Juice Grains Honey Graham Crackers	29	Lunch Entree S&F Foods Turkey Ham & Cheese Stromboli Vegetables Green Beans Broccoli Fruit Apple Crisps Apple Juice	30		

In accordance with Federal civil rights law and U.S. Department of Agriculture (USDA) civil rights regulations and policies, the USDA, its Agencies, offices, and employees, and institutions participating in or administering USDA programs are prohibited from discriminating based on race, color, national origin, religion, sex, disability, age, marital status, family/parental status, income derived from a public assistance program, political beliefs, or reprisal or retaliation for prior civil rights activity, in any program or activity conducted or funded by USDA (not all bases apply to all programs). Remedies and complaint filing deadlines vary by program or incident.

Persons with disabilities who require alternative means of communication for program information (e.g., Braille, large print, audiotape, American Sign Language, etc.) should contact the State or local Agency that administers the program or contact USDA through the Telecommunications Relay Service at 711 (voice and TTY). Additionally, program information may be made available in languages other than English.

To file a program discrimination complaint, complete the USDA Program Discrimination Complaint Form, [AD-3027](#), found online at How to File a Program Discrimination Complaint and at any USDA office or write a letter addressed to USDA and provide in the letter all of the information requested in the form. To request a copy of the complaint form, call [\(866\) 632-9992](#). Submit your completed form or letter to USDA by:

mail: U.S. Department of Agriculture, Office of the Assistant Secretary for Civil Rights, 1400 Independence Avenue, SW, Mail Stop 9410, Washington, D.C. 20250-9410;
 fax: [\(202\) 690-7442](#); or
 email: program.intake@usda.gov.